

Owners Manual





We are a company that believes in helping people find their paradise on and around the water. In the winter of 2014 while sitting on a beach in Hawaii, we had a dream to create paddleboards that blend the Canadian qualities of innovation, spaciousness and adventure together with the Hawaiian qualities of aloha and relaxation. We wanted a paddleboard that easily allowed us to pursue our passion on any body of water available in our breathtaking, vast country with zero compromises on quality. We believe we have succeeded in creating a line of paddleboards that allow people to connect with both nature and their loved ones on the water.

The company was named after a little peaceful village with a zest for fully living life. Anahola is the location of an ancient surfing area on the island of Kauai known for its stunning landscape and its feeling of paradise. We believe we have captured the beauty of this ancient place in our board's esthetics and handling. And while we love to escape to Hawaii, we truly wanted a board designed for the vastness and diversity of Canadian bodies of water. In Canada most of us don't live on or within walking distance to the water, so we designed a board that could easily transported in multiple quantities to the bodies of water we love to find our paradise on.

Located just outside Edmonton, we are Alberta's 1st inflatable paddleboard designer. We specialize in custom paddleboards designed with quality, functionality and innovation in mind. We hope you enjoy this skillfully crafted piece of equipment as much as we enjoyed designing it for you.

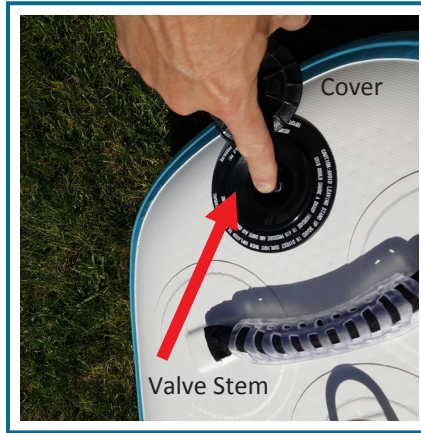
Find your Paradise

Inflation Instructions



1

Remove your board from the Backpack or Bag, and unroll the iSUP flat on a smooth clean surface.



2

Open inflation/deflation valve cover by turning it counter clockwise. Ensure the valve stem located in the center of the valve is in the upright "engaged" position by turning it counter clockwise so it pops up.



3

Assemble the pump by attaching the threaded end of the hose to the air outlet of the pump located on the handle with a clockwise twist until snug, do not overtighten.



4

Attach the free end of the hose to the iSUP board by inserting it into the opening of the inflation valve and locking it in place with a clockwise twist.



5

Start Pumping. Depending on your speed, it may take 3-5 minutes to get the gauge to start to climb. The air pressure gauge must read a MINIMUM of 15 psi. Inflate to between 15-22 psi for optimal performance .
***MINIMUM 15 PSI**



6

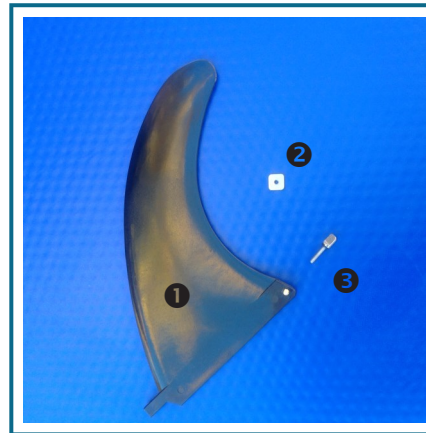
It is critical to ensure it is inflated to a minimum of 15 psi. *Under inflation will void all warranty.*

Inflation Instructions



7

Your board should now be fully inflated and wrinkle free. Next, roll it over so the bottom of the board is facing the sky to attach the fin to the fin box



8

The fin is a 3 part assembly:

- 1 Fin
- 2 Retainer plate
- 3 Screw



9

Slide the brass rod at the back of the fin down at an angle into the wide opening of the fin box and set into the groove. Slide the fin to the back of the box as shown.



10

Insert the retainer plate down into the wide part of the channel in the fin box and move it forward into the channel slot.



11

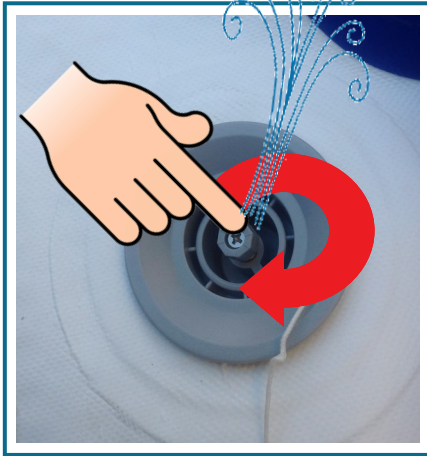
Push the tongue of the fin down, lining the hole in the tongue up with the retainer plate. Insert the screw through the hole and turn clockwise to tighten until finger tight ensuring the screw catches the retainer plate.



12

Enjoy your Ride!

Deflation Instructions



1

Wash the board with fresh water. Remove the valve cover. Ensure the valve is clean and clear of all debris. **Turn face and eyes away.** Press the valve stem briefly to “burp” the air pressure.



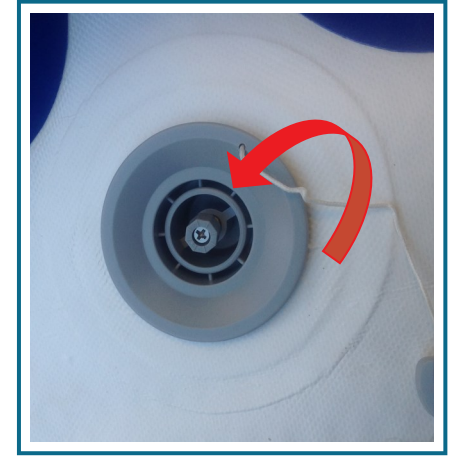
4

Roll/Fold and return to the backpack. To avoid damage, the board must be clean and dry for storing.



2

Press once more, this time pressing and turning clockwise which locks the valve stem open. Deflate and fold starting at the front, Fold in sections all the way to the back effectively removing all remaining air.



3

When board is fully deflated and folded, return the valve stem to the “engaged” position by turning counter clockwise. Replace the protective cap.



5

IMPORTANT: Do NOT fold the board at the fin box as shown. The pressure exerted on the fin box will cause it to crack and will void the warranty

Important Safety Note

When deflating, do not look directly at the valve as any sand, dirt, dust, or debris caught in the valve can potentially fly into your face/eyes and cause injury.



1 Kayak Seat

To attach the Kayak seat, with the seat folded in half, attach the top clips to the front D-rings and the bottom clips to the back D-Rings. Adjust strap tension.



2

Slide the bottom forward and lift the seat up into position. Tighten the straps to suit your body and posture.



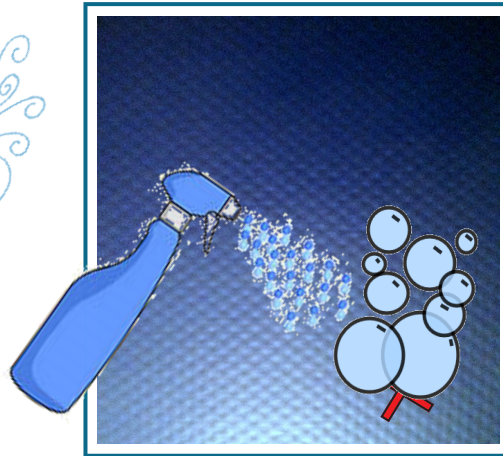
3 Leash

Leashes save lives! Install the leash as shown by folding the Velcro sections over each other to ensure it does not release under strain

Repair Instructions



If your paddleboard develops a leak. It is easily repaired in a few easy steps.



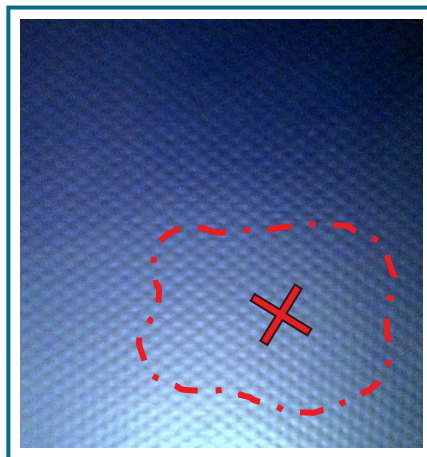
1

Spray a mixture of soapy water over the inflated board to determine the exact location of the puncture. It will bubble at the location of the puncture. Mark the hole. Dry thoroughly and **DEFLATE THE BOARD.**



2

On a deflated board, for punctures less than 1/8", a small dab of glue can be applied directly over the clean and dry hole. Allow to dry completely for 24hours.



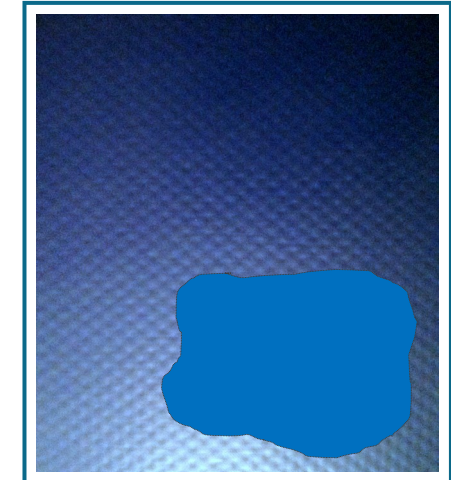
3

For larger repairs: With scissors cut one of the supplied patches 2" larger than the edges of the tear. Round the corners as square corners are prone to snagging and tearing.



4

1. Trace the outline of the patch with a pencil on the damaged area. 2. Clean the surface thoroughly with acetone or toluene. Allow to dry. 3. Apply 2 thin even coats of adhesive to both surfaces. Allow to dry 5-10 minutes until tacky to the touch.



5

Position the patch directly over the traced line and roll the patch into place to avoid trapping air bubbles. Roll across the surface with a smooth roller or the air valve tool to ensure a good bond. Allow to dry 24 hours before adding air.

Warning and Safety Precautions General Warnings:

- Stand-up Paddling is a dangerous sport. Use of this product exposes the user to unexpected risks, dangers and hazards.
- Always use extreme caution when using this product. Never act in a careless manner when using this product. Misuse of this product may result in serious injury or death.
- Only use this product if you are in good physical health, and know how to swim.
- You are responsible for your own safety and the safety of others around you when using this product.
- If you are under the age of 18, you must have a legal guardian read these warnings and safety precautions. Do not use this product without adult supervision.
- Do not use this product if you are under the influence of alcohol, drugs or medications.

Important Safety Rules:

- Before using this product, the user should take lessons from a certified school. This product should not be used by anyone who is not experienced with stand-up paddling.
- Always wear a Coast Guard Approved personal flotation device when using this product. This product is not a personal flotation device.
- Observe all rules and regulations in the jurisdiction of use. Check with local jurisdictions to ensure compliance.
- Never use this product without a proper leash. A loose stand-up board in the water is extremely dangerous to you, and everyone around you. Failure to use a leash may result in serious injury or death.
- Examine your leash after each use, and replace it if you see any signs of abrasion or wear.

Weather Condition & Location Warnings:

- Always observe Coast Guard rules and regulations when using this product.
- Never use this product in offshore wind conditions.
- Never use this product in more than 10 knots of wind. Using this product in windy conditions may result in serious injury or death.
- Use caution when carrying this product. Carrying the board in windy conditions may result in serious injury to yourself and others around you.
- Never use this product in thunderstorms and lightning conditions.
- Never use this product in conditions that are beyond your ability (such as, but not limited to, high surf, riptides, currents, or river rapids).
- Never use this product near other boat traffic, or watercrafts.
- Never use this product near crowded beaches or waters.

Release of Liability, Claim Waiver and Assumption of Risk Agreement Release and Waiver of Claims Agreement

In consideration of your use of this product, you hereby agree to the following, to the fullest extent permitted by law: 1. To waive any and all claims that you have or may in the future have against Anahola Board Co. Ltd or any of its agents, resulting from use of this product and any of its components; and 2. To release Anahola Board Co. Ltd, or any of its agents from any and all liability from any loss, damage, injury or expense that you or any users of this product may suffer, or that your next of kin may suffer, as a result of the use of this product, due to any cause whatsoever, including negligence or breach of contract on the part of Anahola Board Co. Ltd or any of its agents, in the design or manufacture of this product.

Arbitration

In further consideration of the sale to you of this product and any of its components, you hereby agree to submit to binding arbitration any and all claims, which you believe you may have against Anahola Board Co. Ltd or any of its agents, arising from the use of any of the Anahola Board Co. Ltd equipment. The arbitration shall be pursuant to the rules of the Canadian Arbitration Association.

Arbitration shall be commenced within one (1) year from the date on which any alleged claim first arose. Further, the arbitration shall be held in Edmonton Alberta , Canada unless mutually agreed by all parties.

Binding Effect of Agreement

In the event of your death or incapacity, this agreement shall be effective and binding upon your heirs, next of kin, executors, administrators, assigns and representatives.

Entire Agreement

In entering into this agreement, you are not relying upon any oral or written representations other than what is set forth in this agreement and Owners Manual. Assumption of Risk: By purchasing, using and assembling this product, you are agreeing to: 1. Be bound to the terms set forth below; and 2. Require anyone using this product to be bound by such terms. If you are unwilling to be bound by these terms, return this product before use for a refund. Use of this product and any of its components involves certain inherent risks, dangers and hazards, which can result in serious personal injury and death. In using this product you freely agree to assume and accept any and all known and unknown risks of injury while using this equipment. The risks inherent in the sport can be greatly reduced by abiding to the Warning and Safety Precautions listed in this Owners Manual and using first and foremost, common sense.

WARRANTY POLICY

Anahola Board Co. Ltd. warrants this product to be free from major defects in material or workmanship to the original purchaser for a period of one (1) year from the date of purchase.

This warranty is subject to the following limitations:

- 1. The warranty is valid only when the product is registered with Anahola Board Co. Ltd. within fourteen (14) days from the date of purchase.
- 2. The warranty is valid only when this product is used for normal recreational activities and does not cover products used in rental, institutional, commercial operations.
- 3. Anahola Board Co. Ltd will make the final warranty determination, which may require inspection and/or photos of the equipment, which clearly show the defect(s). If necessary, this information must be sent to Anahola Board Co. Ltd with prepaid postage. Product can be returned directly to Anahola Board Co. Ltd only if a return authorization number is given in advance and clearly marked/indicated on the outside of the package/shipping documentation, or it will be refused.
- 4. If a product is deemed to be defective by Anahola Board Co. Ltd, the warranty covers the repair or replacement of the defective product only. Anahola Board Co. Ltd. will not be responsible for any costs, losses, or damages incurred as a result of loss or use of this product.
- 5. This warranty does not cover damage caused by misuse, abuse, neglect, normal wear and tear including, but not limited to, punctures, damage due to excessive heat exposure, damage caused by improper handling and storage, damage caused by use in waves or shore break, abrasion, board breakage caused by falling or crashing in surf conditions, damage from improper inflation or deflation, or damage caused by anything other than defects in material and workmanship.
- 6. This product must not be modified and/or fitted with a motor or any unauthorized accessories.
- 7. This product must not be used in excess of the manufacturers recommended maximum load capacity.
- 8. This warranty is void if any unauthorized repair, change or modification has been made to any part of the equipment.
- 9. The warranty for any repaired or replacement equipment is good from the date of the original purchase only.
- 10. The original purchase receipt must accompany all warranty claims. The name of the retailer and date of purchase must be clear and legible.
- 11. There are no warranties that extend beyond the warranty specified here in.

This product is designed in accordance with standards for a specific use. Any modifications or transformations other than those which are indicated by the manufacturer could result in serious risks for the user and will void the warranty.

WARRANTY CARD



NAME _____

ADDRESS _____

CITY _____

PROVINCE/STATE _____

POSTAL CODE _____

EMAIL ADDRESS _____

WHERE PURCHASED _____
DATE PURCHASED _____

MODEL _____

Anahola Board Co.

C/O Warranty Department

#181 53050 RR214

Ardrossan, Alberta, Canada

T8E 2E1

Or Scan and email to :

Anaholaboardco@gmail.com

Attn : Warranty Department

Or register online: anaholaboardco.com

Please include copy of original purchase receipt





www.anaholaboardco.com

Connect with Us!

